

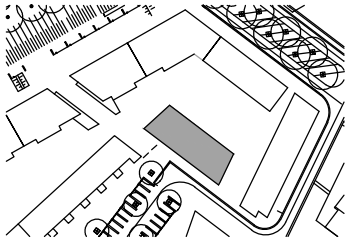
M⁸

Woningdifferentiatie
Schaal: 1:200
Datum: mei 2019

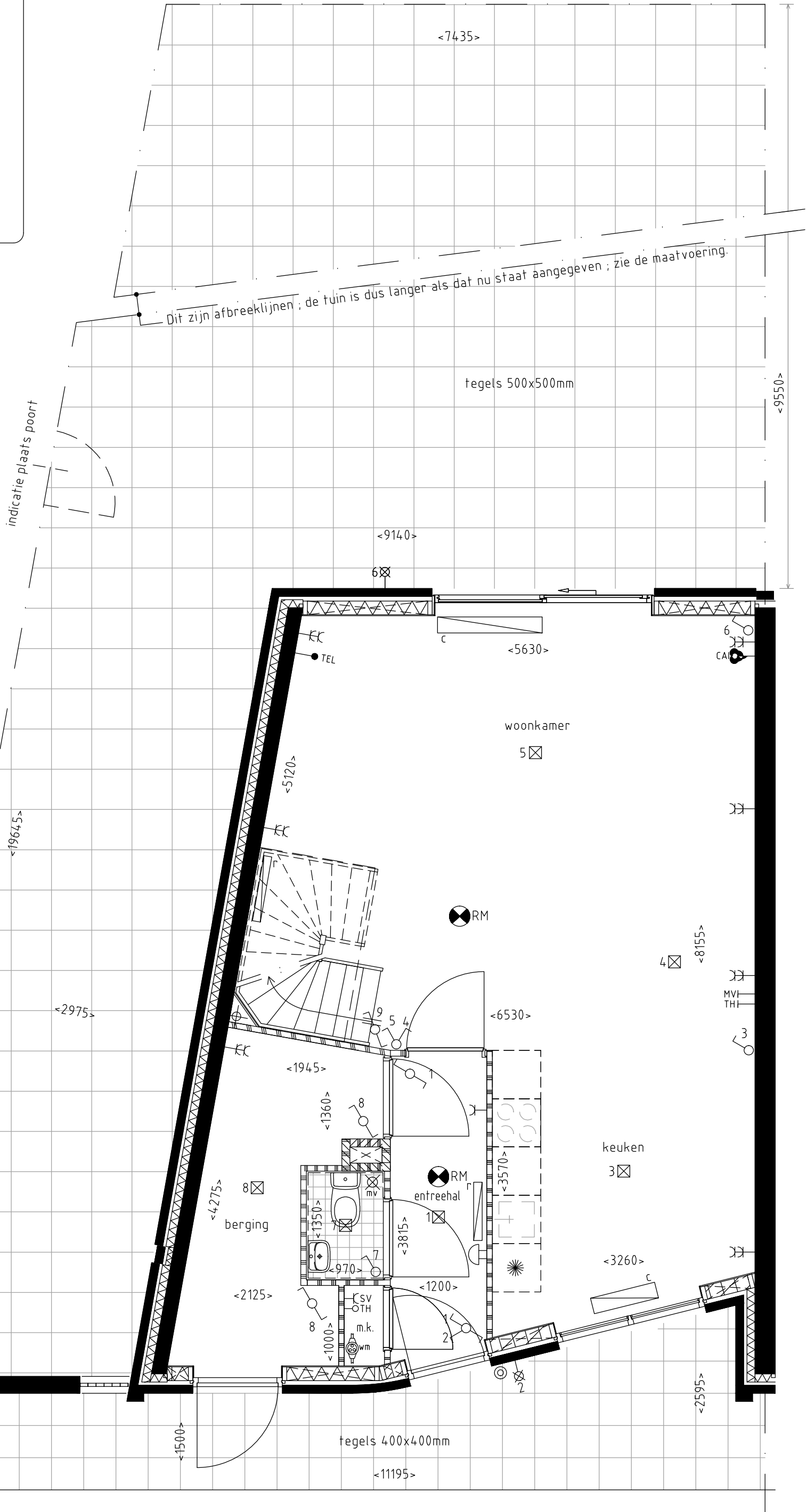
The complex block contains a site plan at the top right, a title 'M⁸', and a text box at the bottom with the following information: 'Woningdifferentiatie', 'Schaal: 1:200', and 'Datum: mei 2019'. The site plan shows the building's location within a neighborhood, with a street labeled 'Blaauwke' and a building labeled 'M⁸'.

Tjalk

M⁸



Bouwnummer 16
Begane grond
Schaal: 1:50
Datum: mei 2019



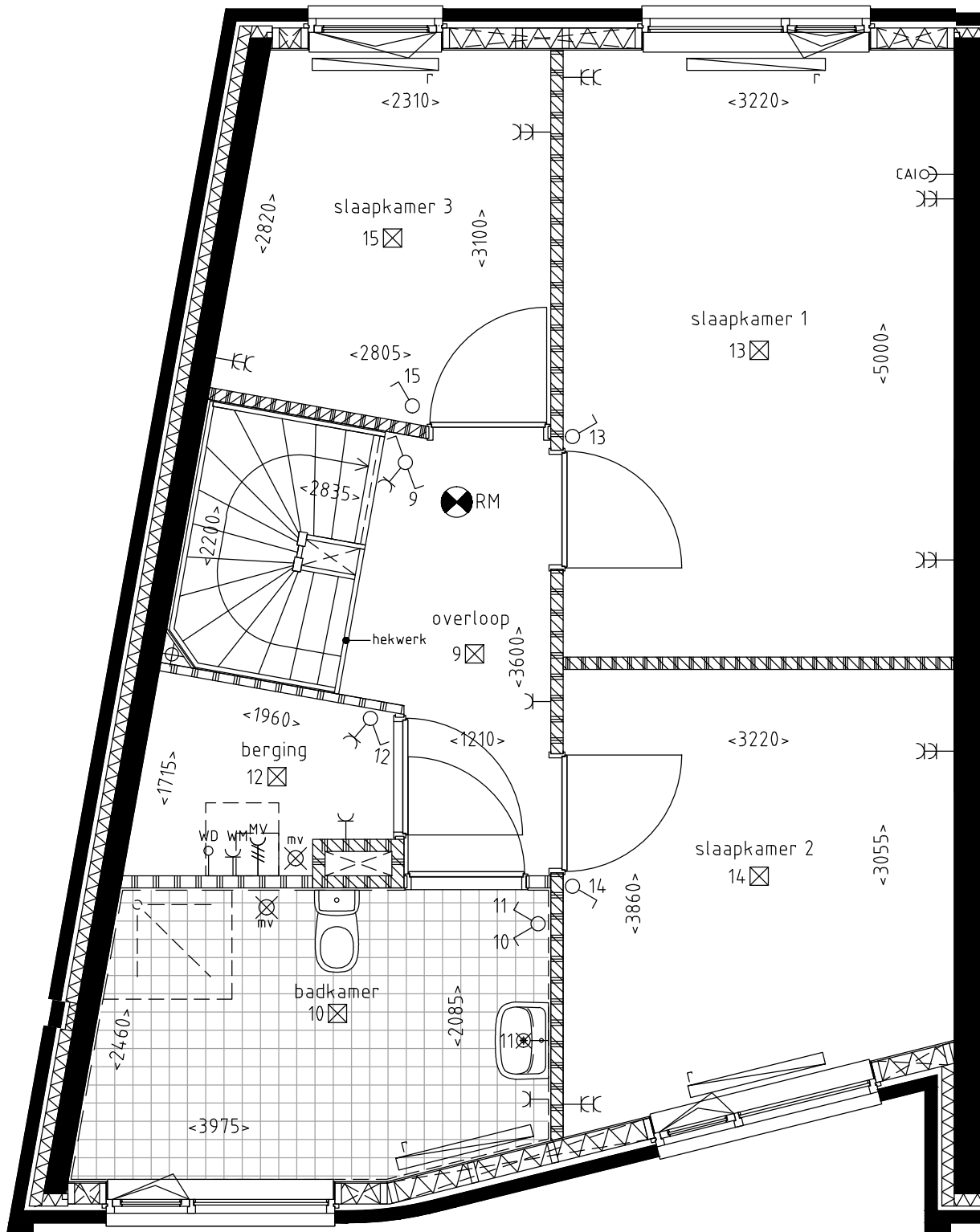
Dit zijn afbreeklijnen; de tuin is dus langer als dat nu staat aangegeven; zie de maatvoering.

indicatie plaats poort

tegels 500x500mm

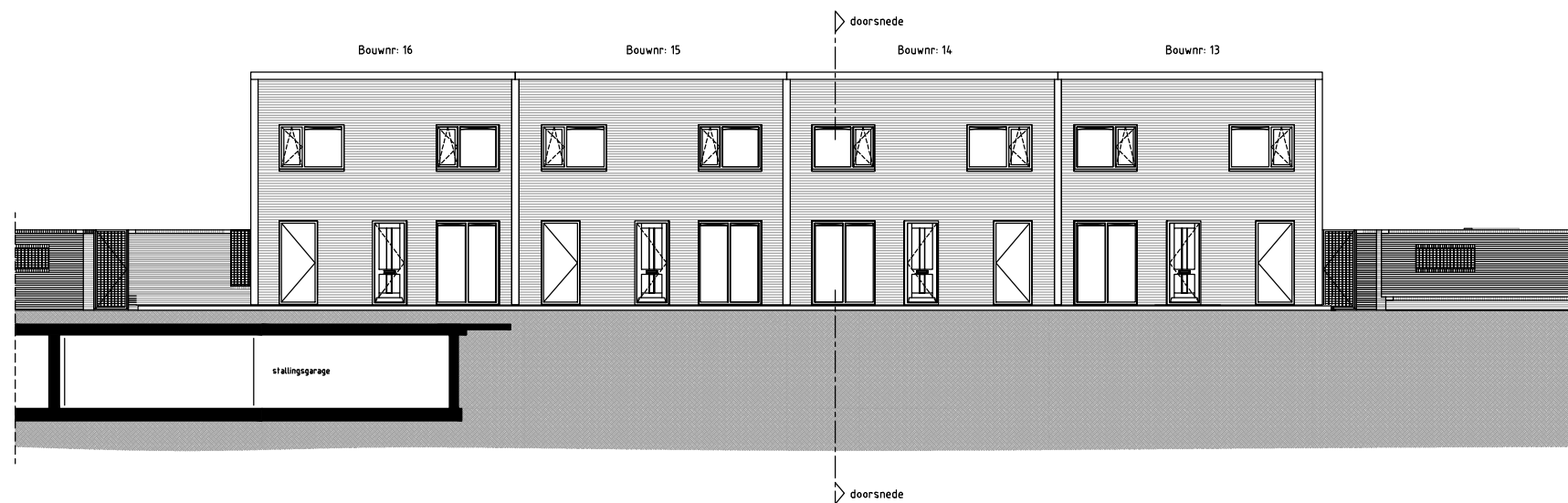
tegels 400x400mm

afstap ± 15 cm

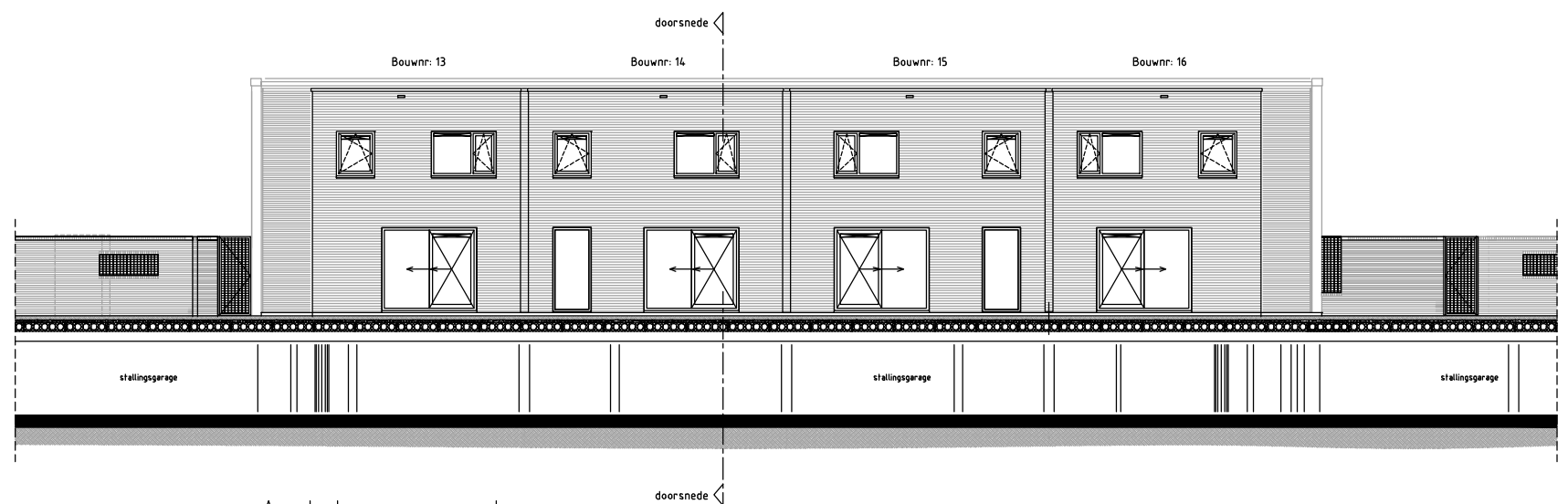


Tjalk M⁸

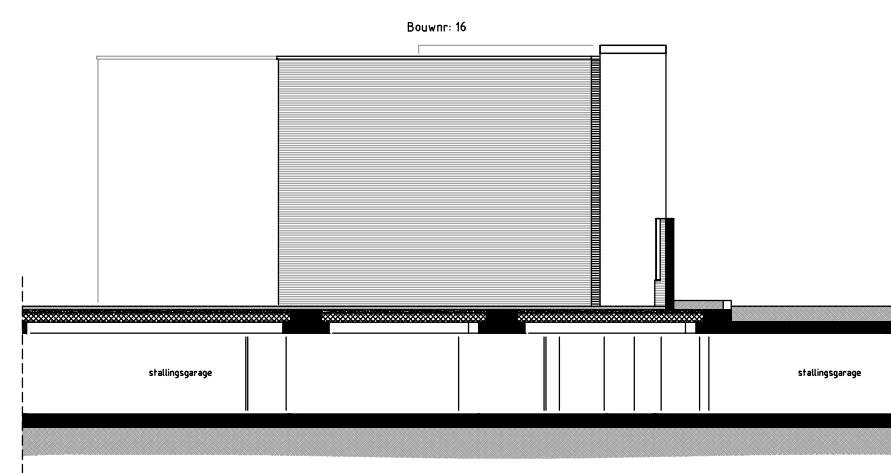
Bouwnummer 16
 1e verdieping
 Schaal: 1:50
 Datum: mei 2019



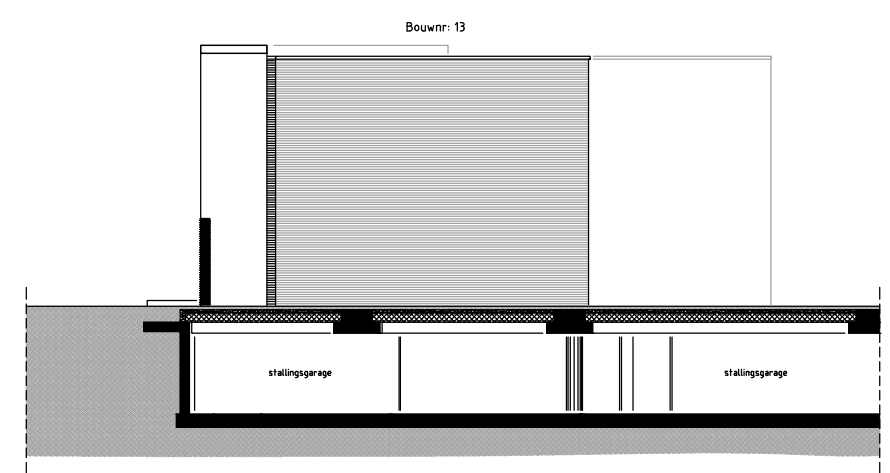
Voorgevel



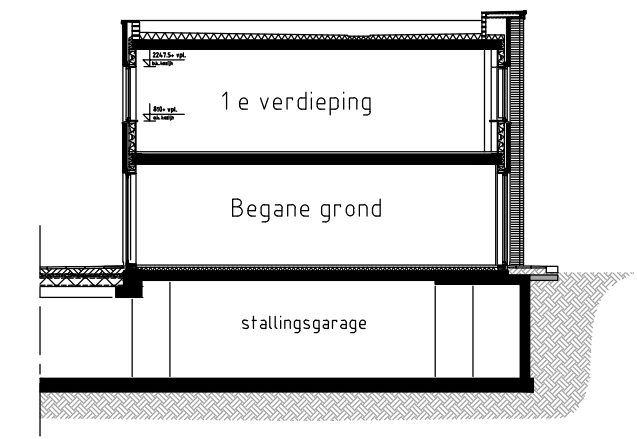
Achtergevel



Linkerzijgevel



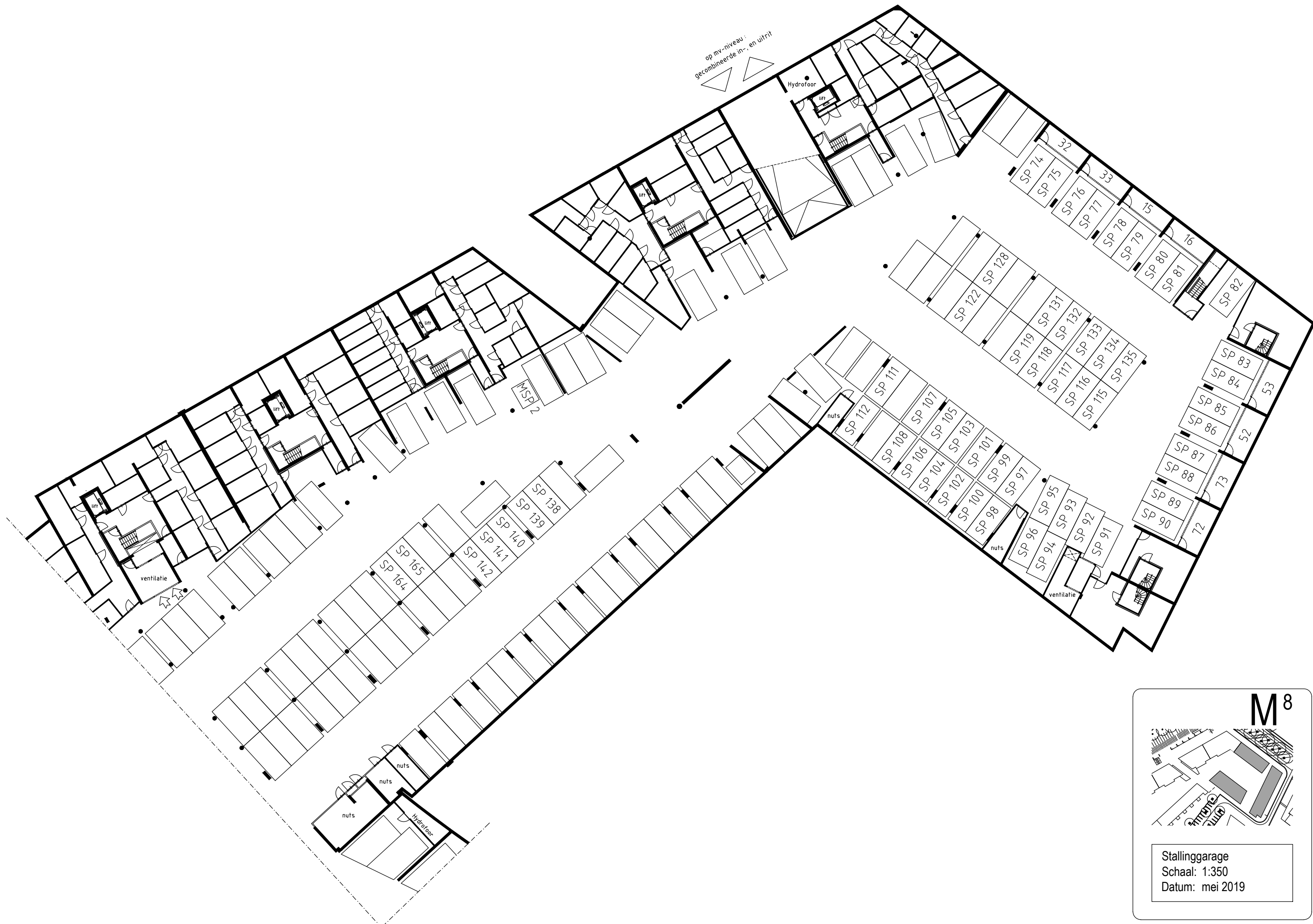
Rechterzijgevel



Doorsnede

Tjalk M⁸





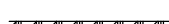

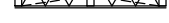
Gevels en Doorsnede
 Schaal: 1:200
 Datum: mei 2019

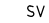




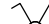

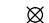
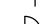
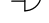



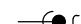



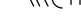
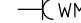






M⁸

Stallinggarage
 Schaal: 1:350
 Datum: mei 2019

Renvooi

-  = metselwerk
 -  = kalkzandsteen, dik 100/150/214
 -  = kalkzandsteen vellingblokken, dik 100
 -  = isolatie
 -  = lichte separatiewand
 -  = lichte separatiewand
 -  = metalstud voorzetwand (met isolatie)
 -  = geïsoleerde houtskeletbouwwand
 -  = beton in het werk gestort
-  = Keukeninstallatie punten conform separate keukeninstallatietekening.

-  = stadsverwarming aansluiting
-  = thermostaat aansluiting
-  = enkelpolige schakelaar met geaarde enkele wandcontactdoos
-  = enkelpolige schakelaar
-  = dubbele schakelaar
-  = dubbele wissel schakelaar
-  = wissel schakelaar met geaarde enkele wandcontactdoos
-  = wissel schakelaar
-  = aansluiting plafondlichtpunt
-  = aansluiting wandlichtpunt
-  = zoemer
-  = drukknop deurzoemer
-  = mechanische ventilatie schakelaar hoofdbediening
-  = kamerthermostaat

-  = telefoonaansluiting (bedraad)
-  = centrale antenne aansluiting (bedraad)
-  = centrale antenne aansluiting (loos)
-  = aansluiting wasdroger (loos)
-  = aansluiting mechanische ventilatie (bedraad)
-  = aansluiting wasmachine (bedraad)
-  = geaarde wandcontactdoos
-  = geaarde dubbele wandcontactdoos
-  = ruimte voorzien van rookmelder(s)
-  = afzuigpunt mechanische ventilatie
-  = watermeter
-  r = radiator
-  c = convector

