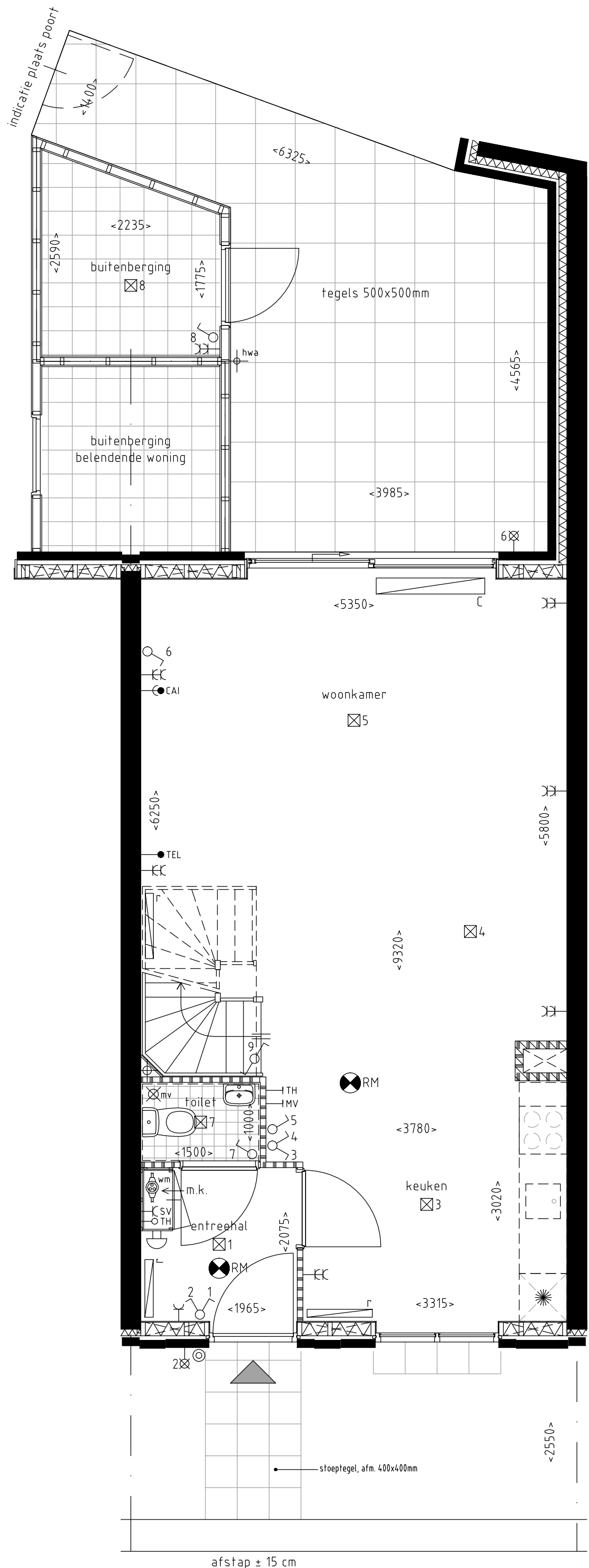


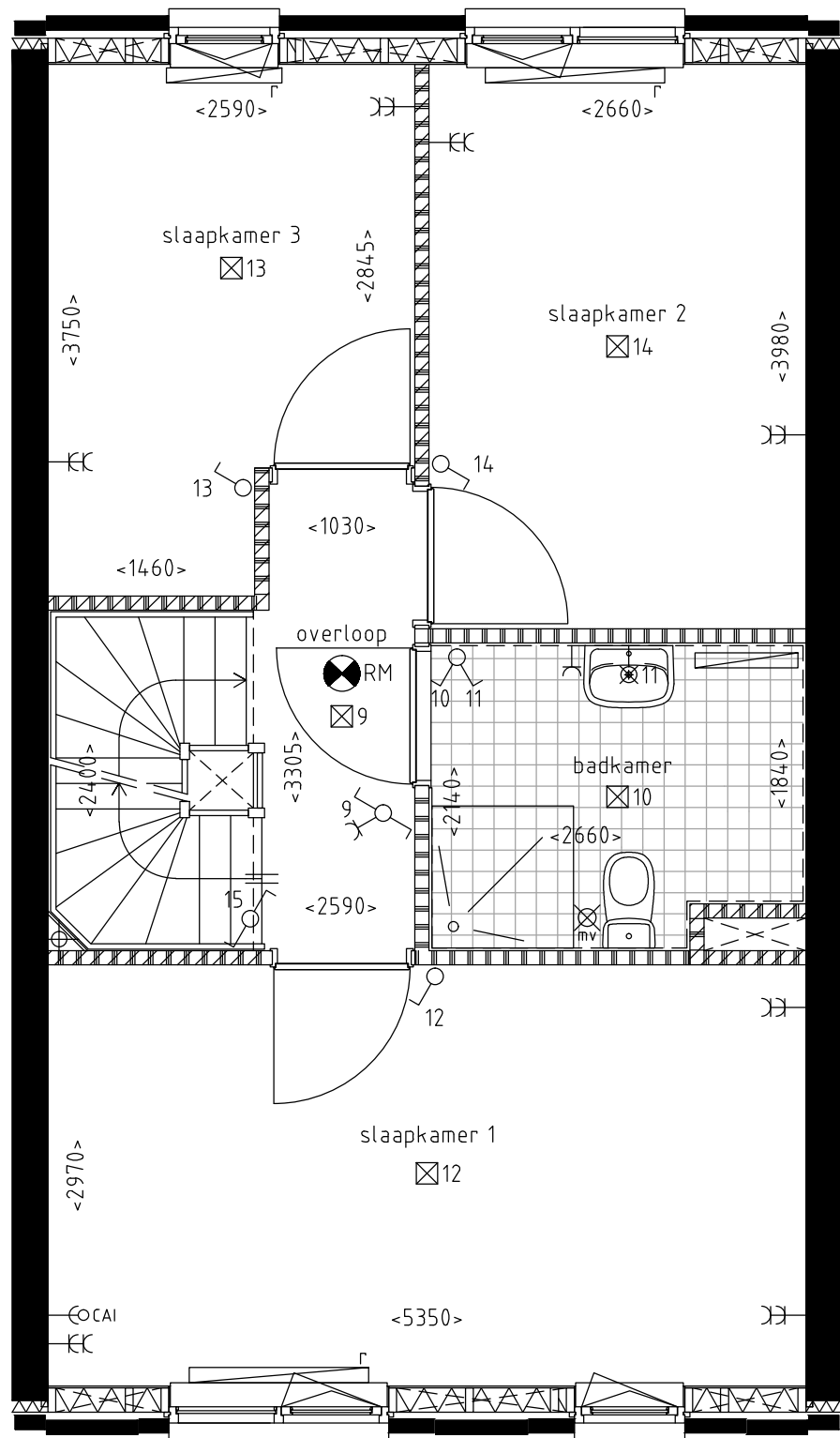
M⁸

Woningdifferentiatie
Schaal: 1:200
Datum: mei 2019

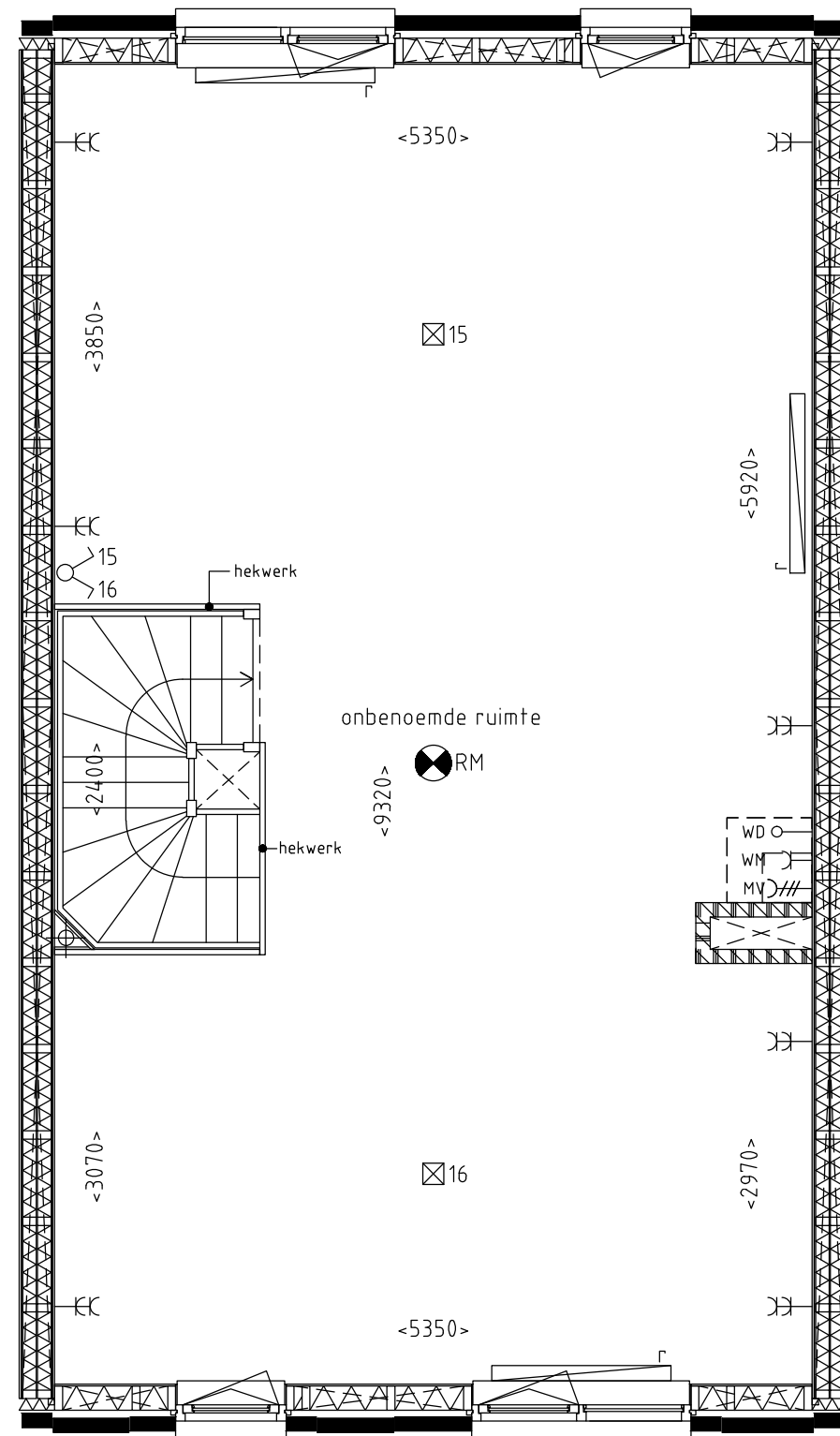


Klipper M⁸

Bouwnummer 7
 Begane grond
 Schaal: 1:50
 Datum: mei 2019



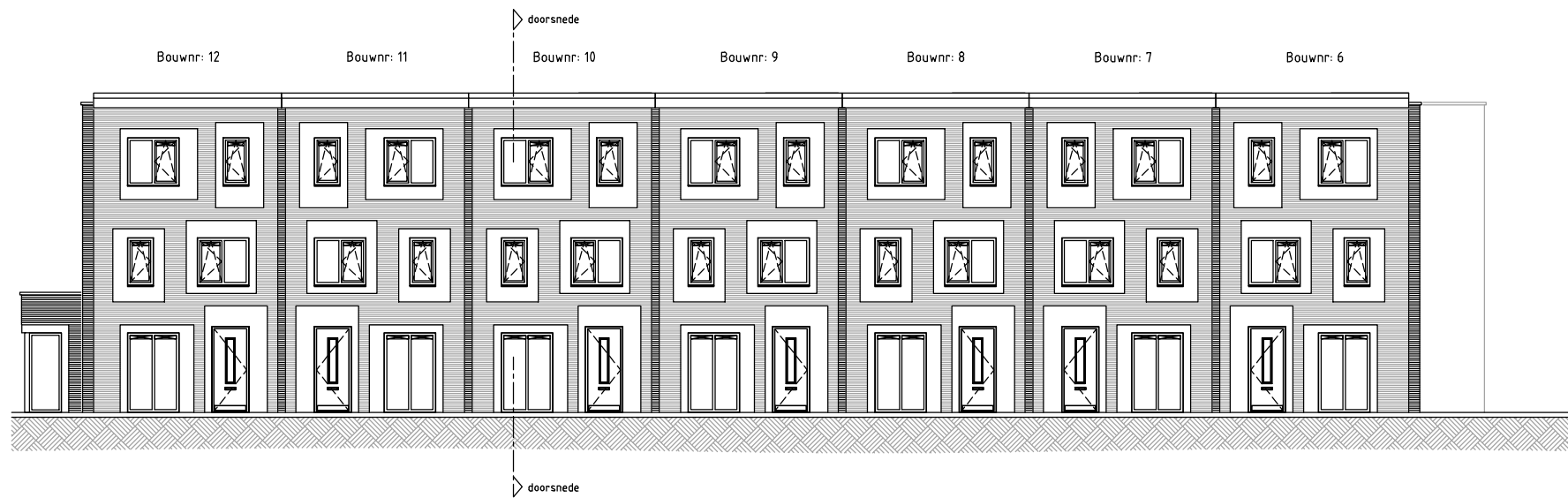
1e verdieping



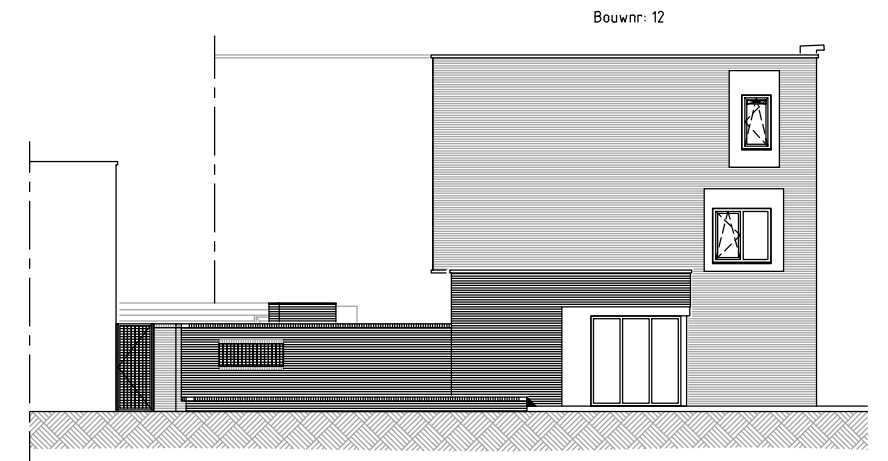
2e verdieping

Klipper M⁸

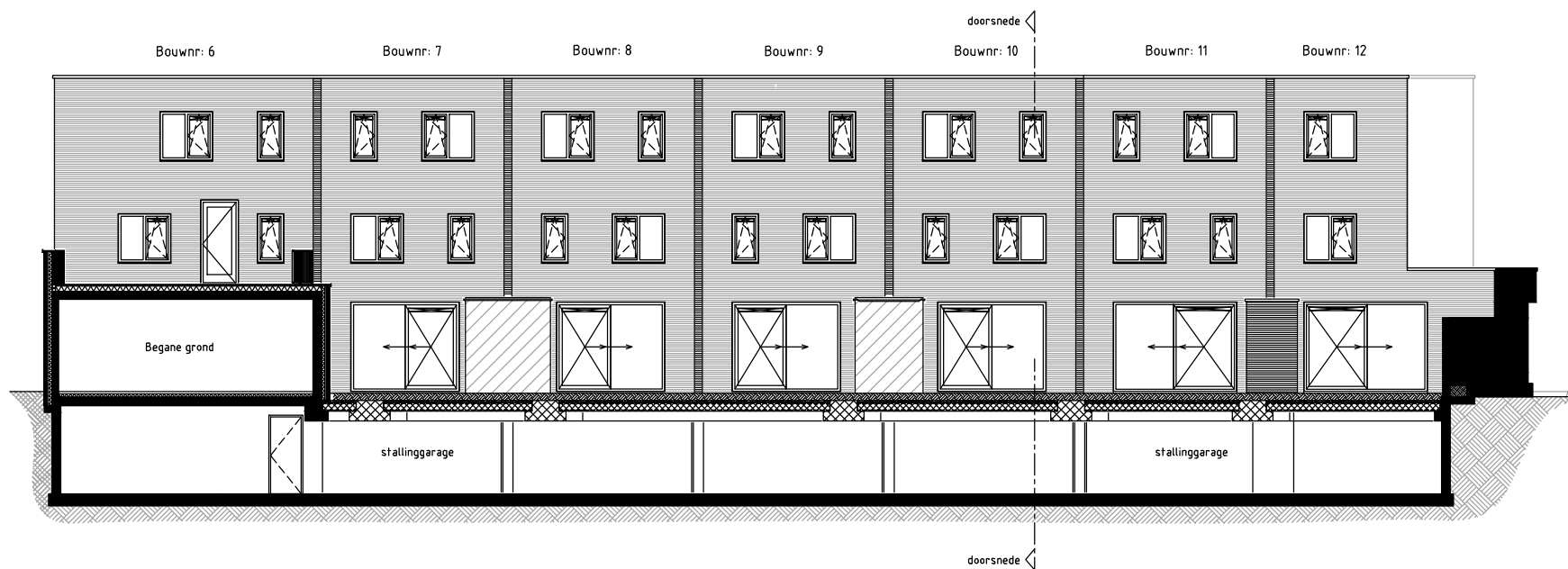
Bouwnummer 7
 1e en 2e verdieping
 Schaal: 1:50
 Datum: mei 2019



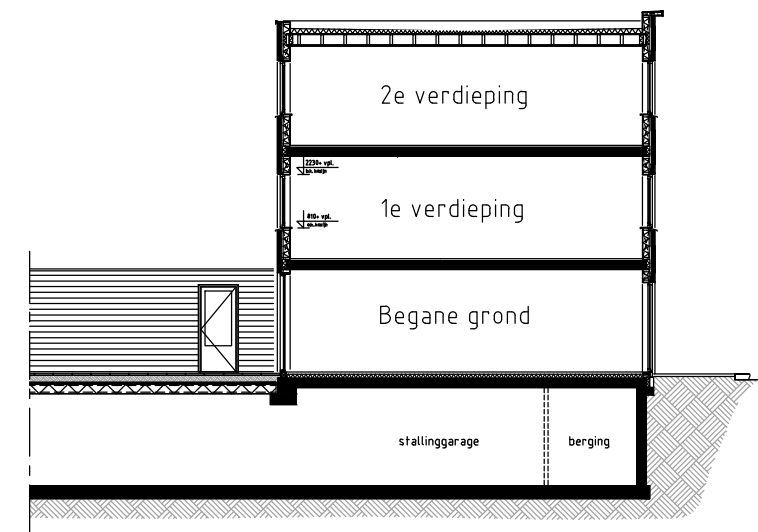
Voorgevel: Bouwnummers 6 t/m 12.



Linkerzijgevel: Bouwnr. 12.



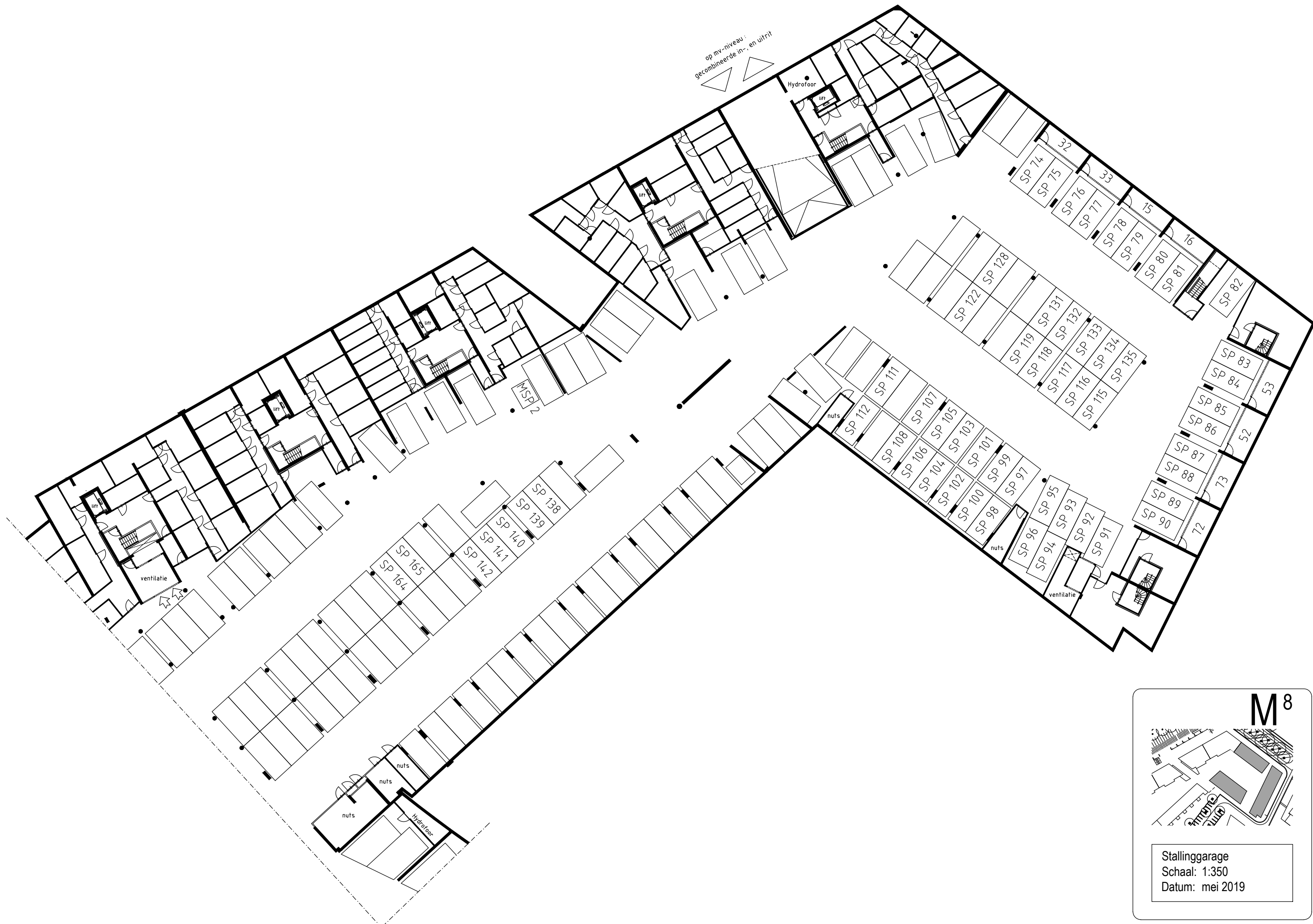
Achtergevel: Bouwnummers 6 t/m 12.



Doorsnede

Klipper M⁸





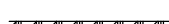

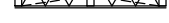
Gevels en Doorsnede
 Schaal: 1:200
 Datum: mei 2019

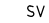




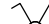

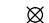
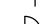
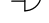



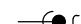



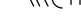
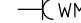






M⁸

Stallinggarage
 Schaal: 1:350
 Datum: mei 2019

Renvooi

-  = metselwerk
 -  = kalkzandsteen, dik 100/150/214
 -  = kalkzandsteen vellingblokken, dik 100
 -  = isolatie
 -  = lichte separatiewand
 -  = lichte separatiewand
 -  = metalstud voorzetwand (met isolatie)
 -  = geïsoleerde houtskeletbouwwand
 -  = beton in het werk gestort
-  = Keukeninstallatie punten conform separate keukeninstallatietekening.

-  = stadsverwarming aansluiting
-  = thermostaat aansluiting
-  = enkelpolige schakelaar met geaarde enkele wandcontactdoos
-  = enkelpolige schakelaar
-  = dubbele schakelaar
-  = dubbele wissel schakelaar
-  = wissel schakelaar met geaarde enkele wandcontactdoos
-  = wissel schakelaar
-  = aansluiting plafondlichtpunt
-  = aansluiting wandlichtpunt
-  = zoemer
-  = drukknop deurzoemer
-  = mechanische ventilatie schakelaar hoofdbediening
-  = kamerthermostaat

-  = telefoonaansluiting (bedraad)
-  = centrale antenne aansluiting (bedraad)
-  = centrale antenne aansluiting (loos)
-  = aansluiting wasdroger (loos)
-  = aansluiting mechanische ventilatie (bedraad)
-  = aansluiting wasmachine (bedraad)
-  = geaarde wandcontactdoos
-  = geaarde dubbele wandcontactdoos
-  = ruimte voorzien van rookmelder(s)
-  = afzuigpunt mechanische ventilatie
-  = watermeter
-  r = radiator
-  c = convector

