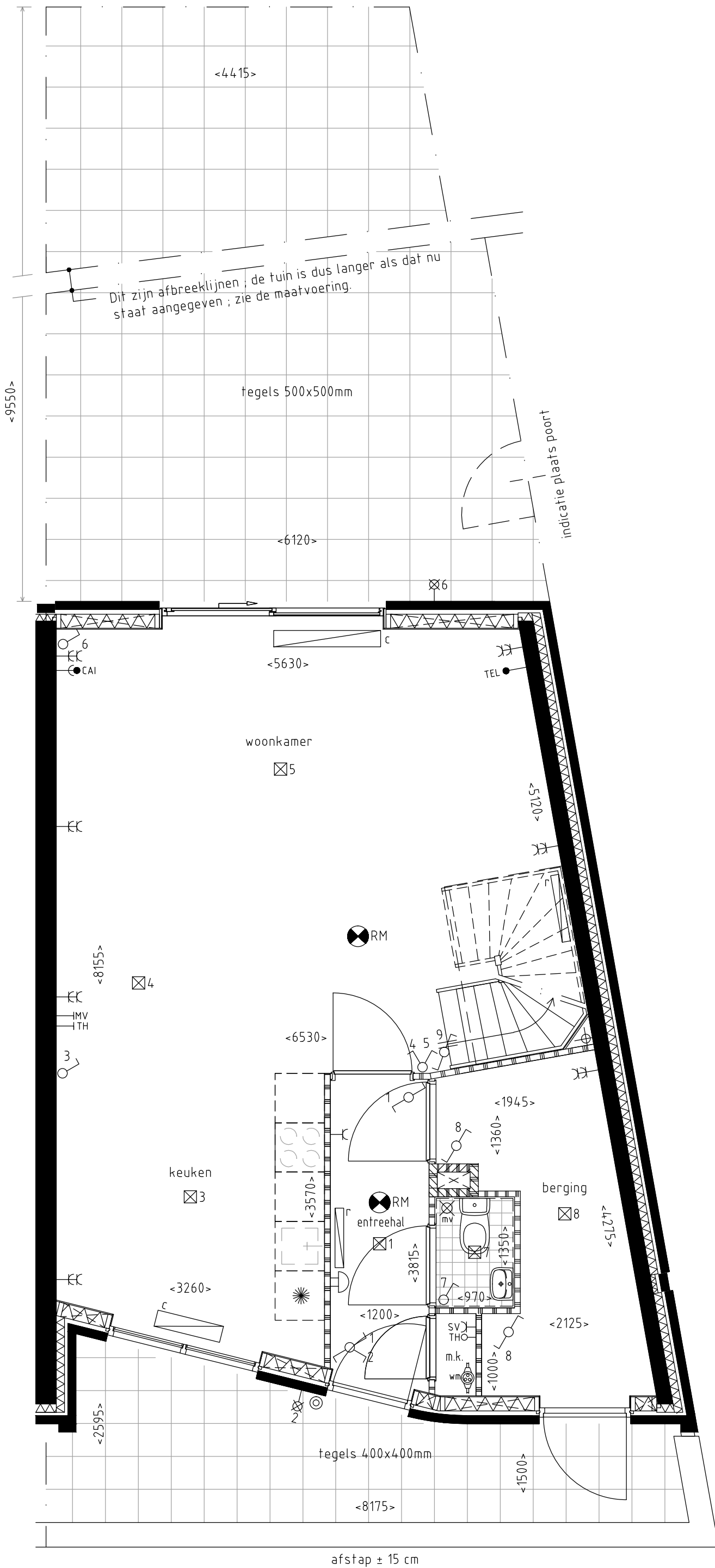


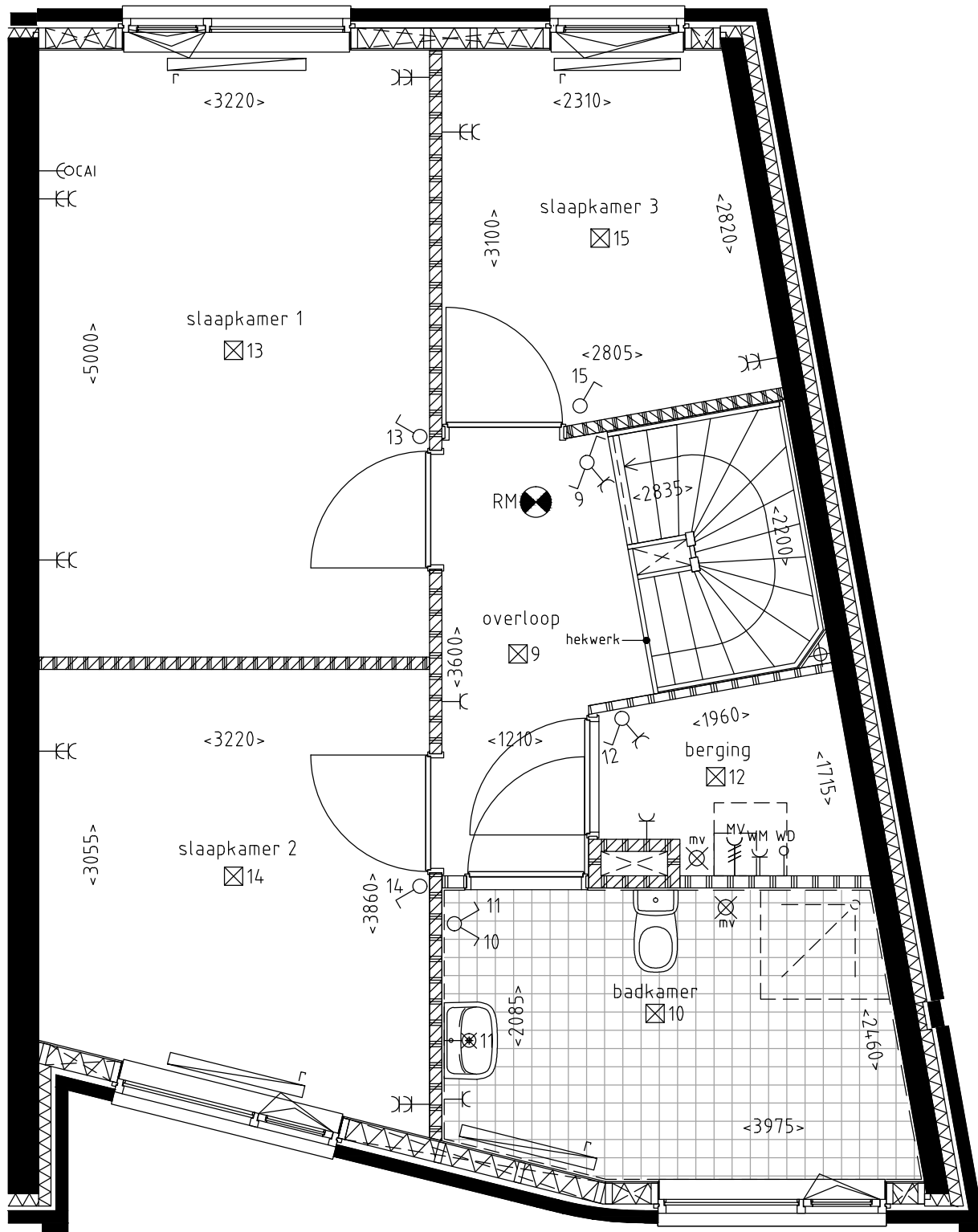
**M<sup>8</sup>**

Woningdifferentiatie  
Schaal: 1:200  
Datum: mei 2019



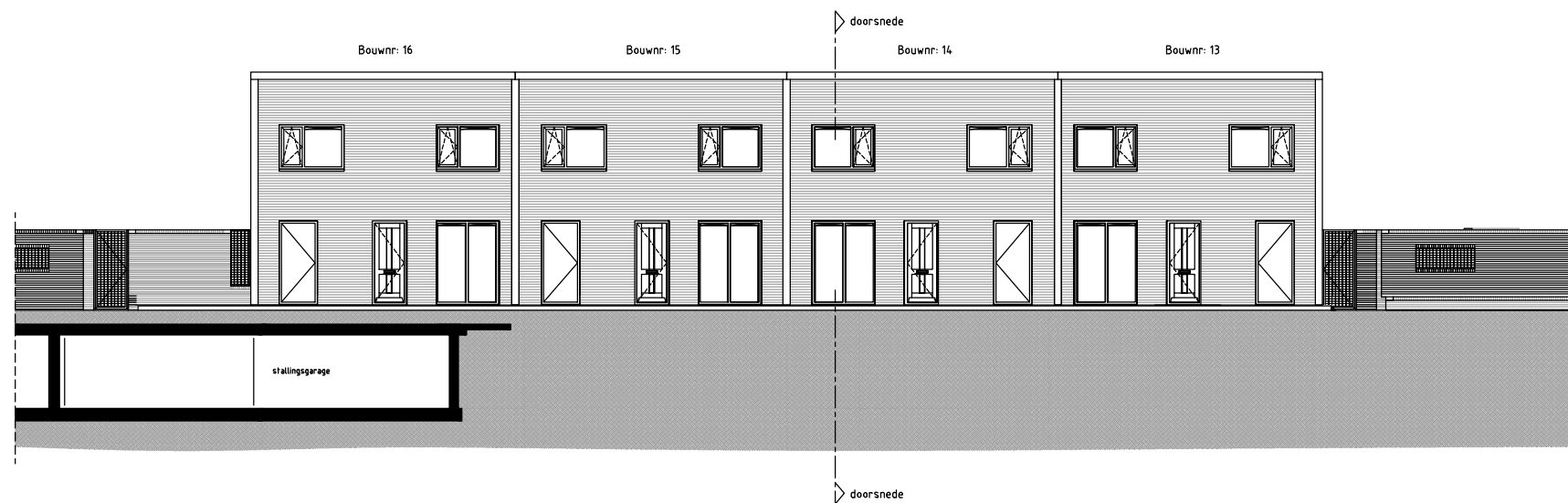
**Tjalk M<sup>8</sup>**

Bouwnummer 13  
 Begane grond  
 Schaal: 1:50  
 Datum: mei 2019

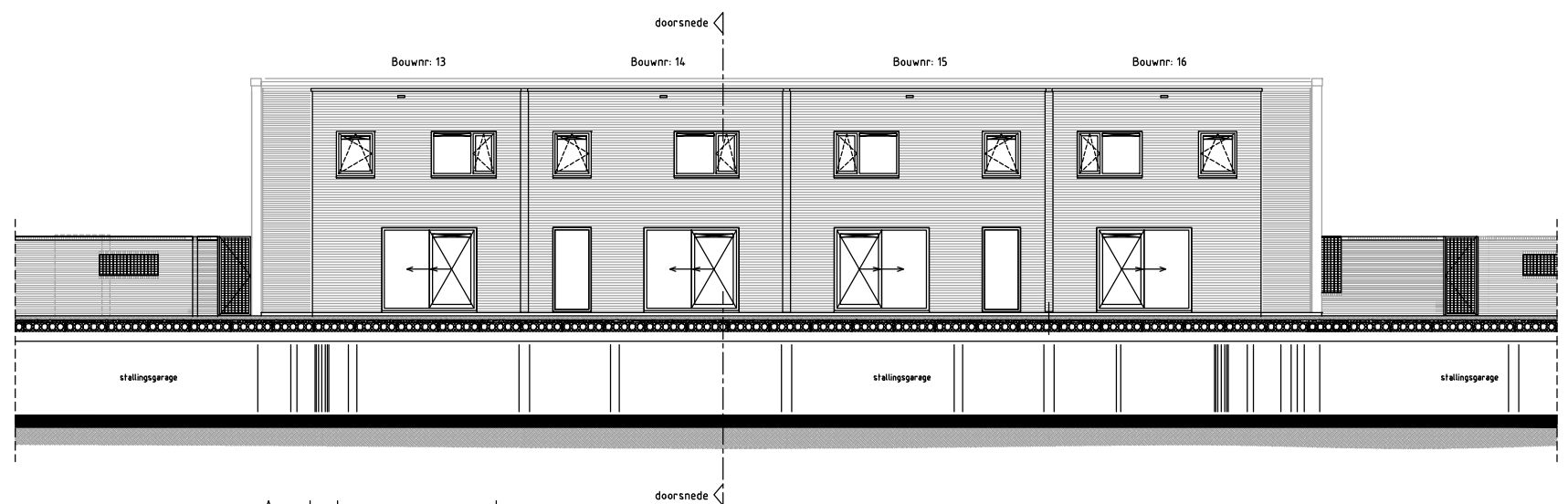


**Tjalk M<sup>8</sup>**

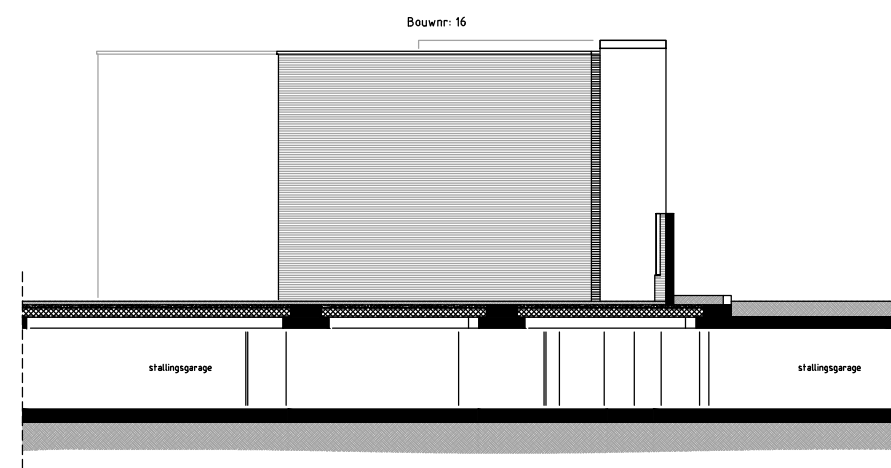
Bouwnummer 13  
 1e verdieping  
 Schaal: 1:50  
 Datum: mei 2019



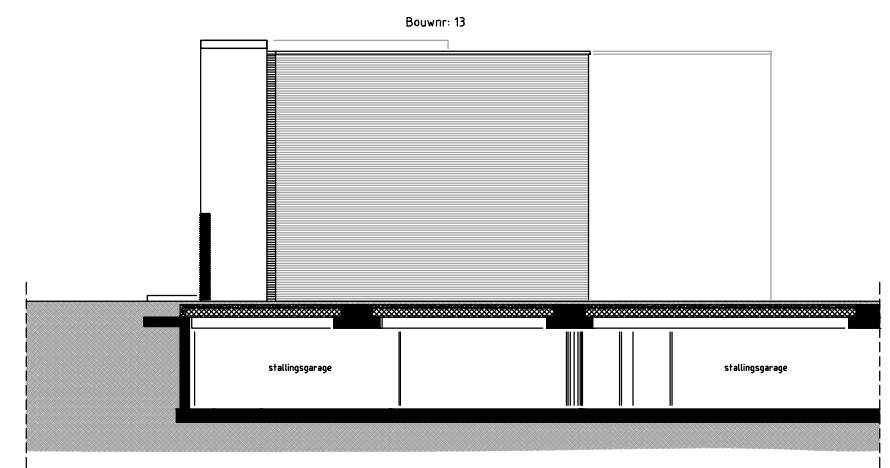
Voorgevel



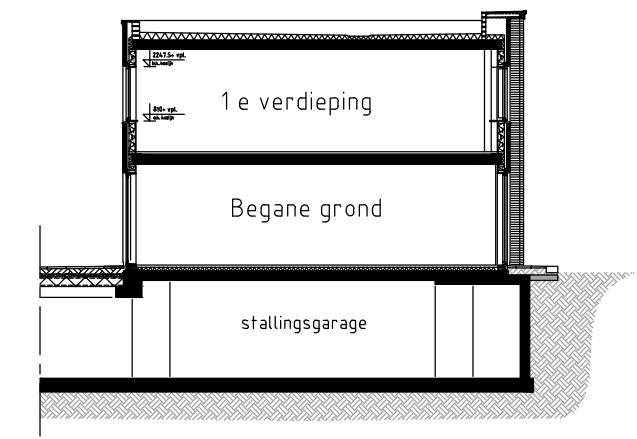
Achtergevel



Linkerzijgevel



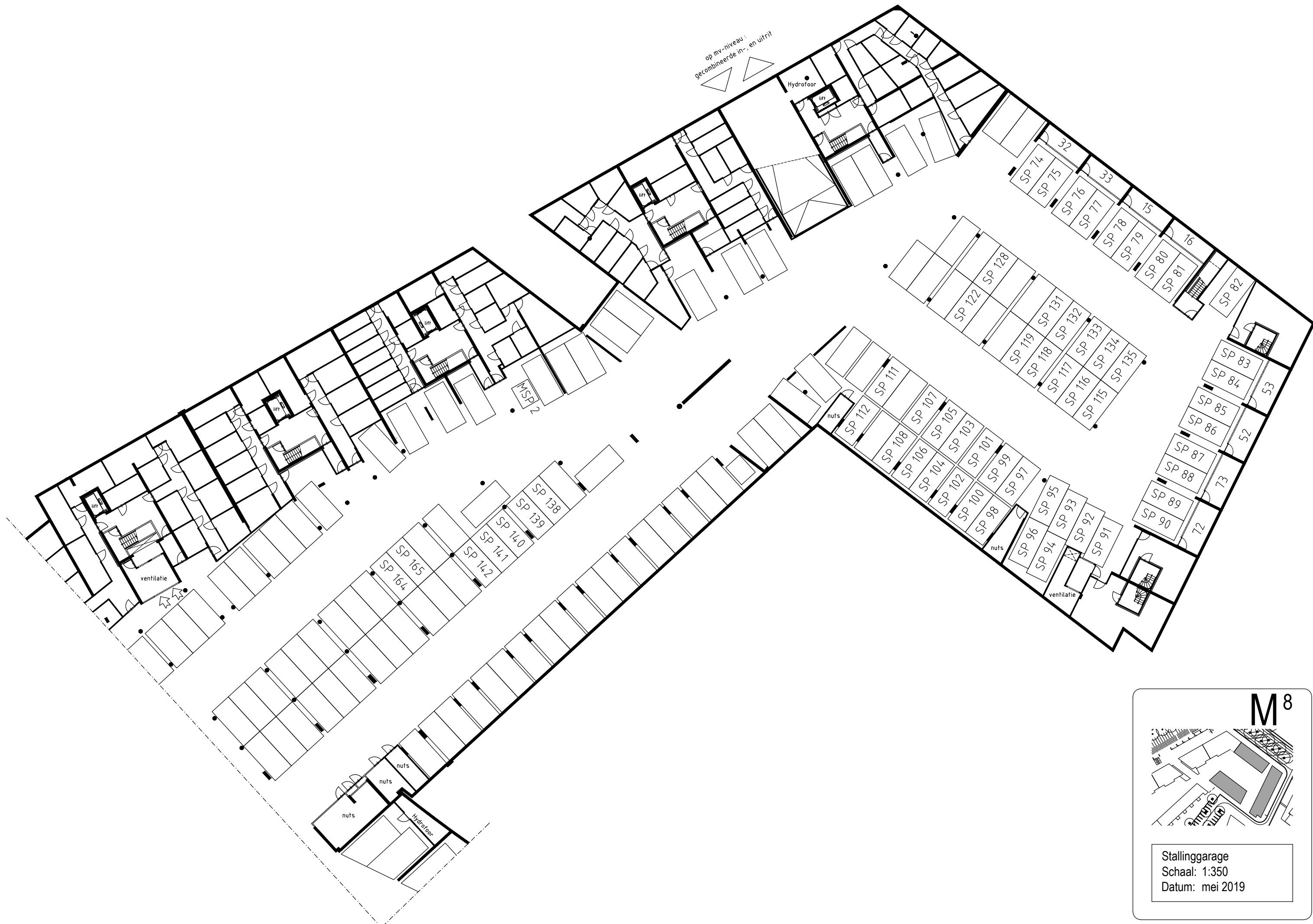
Rechterzijgevel



Doorsnede

**Tjalk M<sup>8</sup>**




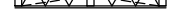
Gevels en Doorsnede  
 Schaal: 1:200  
 Datum: mei 2019

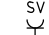
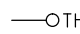
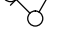
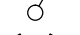
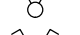




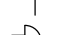
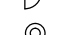

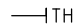


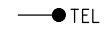
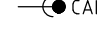
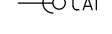
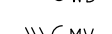
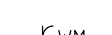





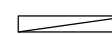
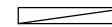

**M<sup>8</sup>**

Stallinggarage  
 Schaal: 1:350  
 Datum: mei 2019

## Renvooi

-  = metselwerk
  -  = kalkzandsteen, dik 100/150/214
  -  = kalkzandsteen vellingblokken, dik 100
  -  = isolatie
  -  = lichte separatiewand
  -  = lichte separatiewand
  -  = metalstud voorzetwand (met isolatie)
  -  = geïsoleerde houtskeletbouwwand
  -  = beton in het werk gestort
-  = Keukeninstallatie punten conform separate keukeninstallatietekening.

-  = stadsverwarming aansluiting
-  = thermostaat aansluiting
-  = enkelpolige schakelaar met geaarde enkele wandcontactdoos
-  = enkelpolige schakelaar
-  = dubbele schakelaar
-  = dubbele wissel schakelaar
-  = wissel schakelaar met geaarde enkele wandcontactdoos
-  = wissel schakelaar
-  = aansluiting plafondlichtpunt
-  = aansluiting wandlichtpunt
-  = zoemer
-  = drukknop deurzoemer
-  = mechanische ventilatie schakelaar hoofdbediening
-  = kamerthermostaat

-  = telefoonaansluiting (bedraad)
-  = centrale antenne aansluiting (bedraad)
-  = centrale antenne aansluiting (loos)
-  = aansluiting wasdroger (loos)
-  = aansluiting mechanische ventilatie (bedraad)
-  = aansluiting wasmachine (bedraad)
-  = geaarde wandcontactdoos
-  = geaarde dubbele wandcontactdoos
-  = ruimte voorzien van rookmelder(s)
-  = afzuigpunt mechanische ventilatie
-  = watermeter
-  r = radiator
-  c = convector

