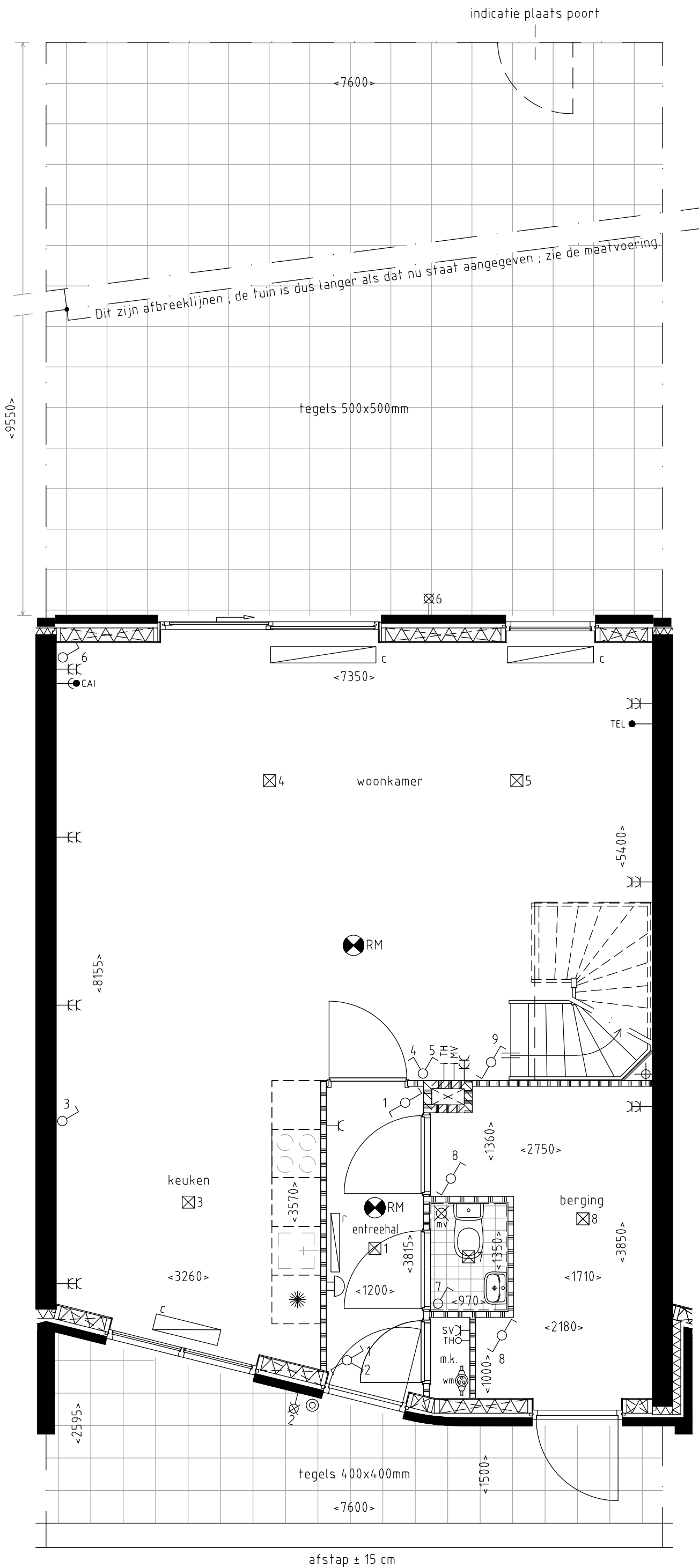


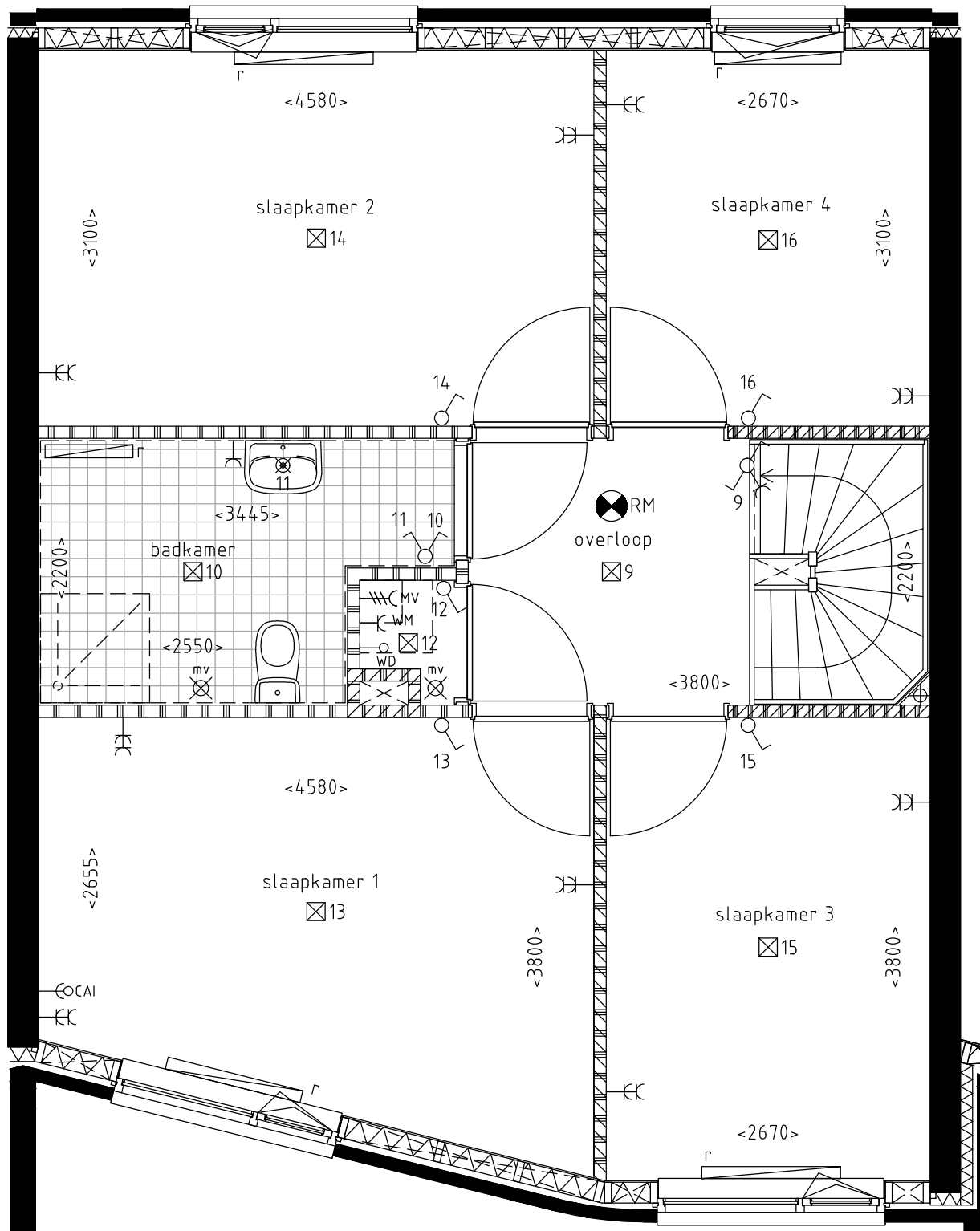
M⁸

Woningdifferentiatie
Schaal: 1:200
Datum: mei 2019



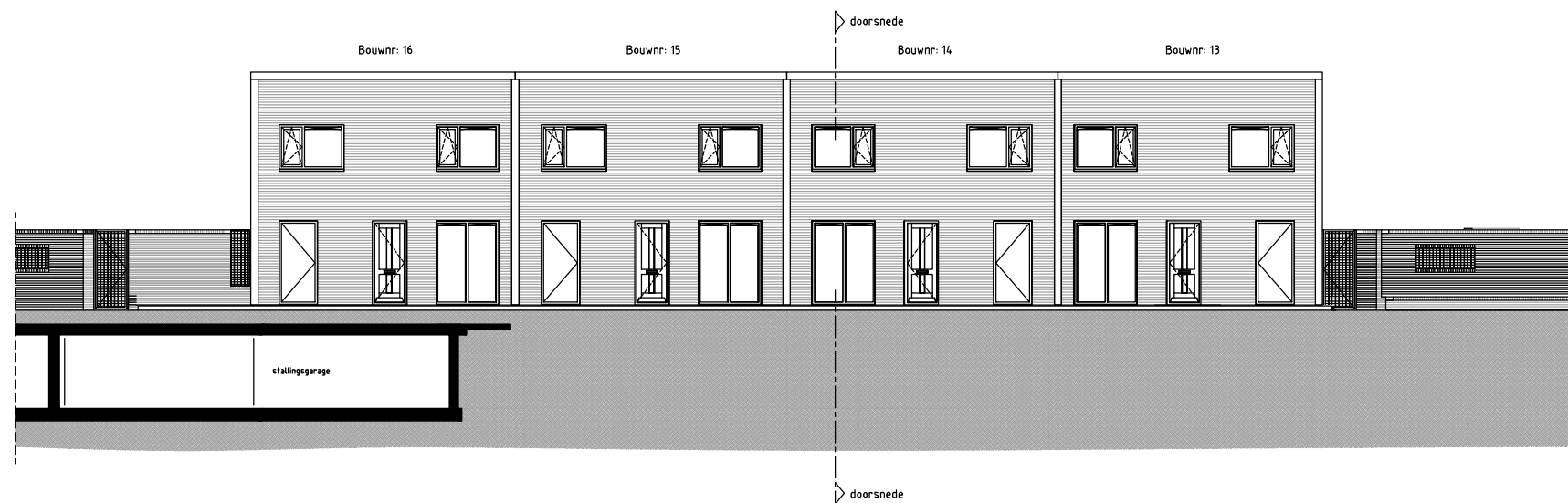
Tjalk M⁸

Bouwnummer 14
 Begane grond
 Schaal: 1:50
 Datum: mei 2019

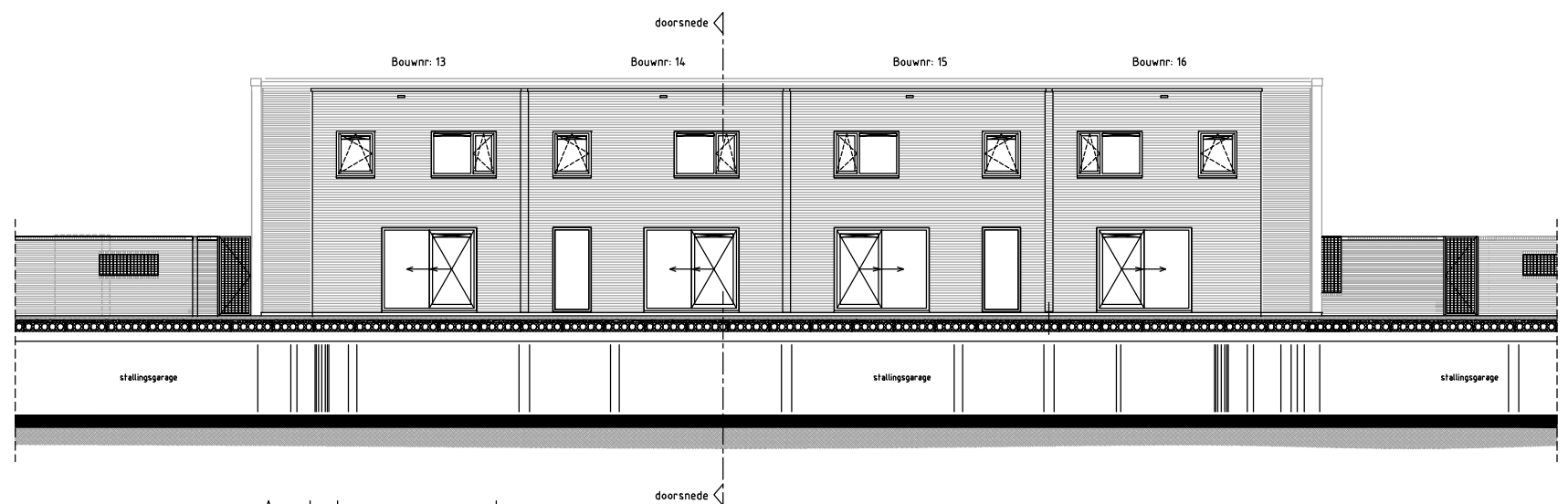


Tjalk M⁸

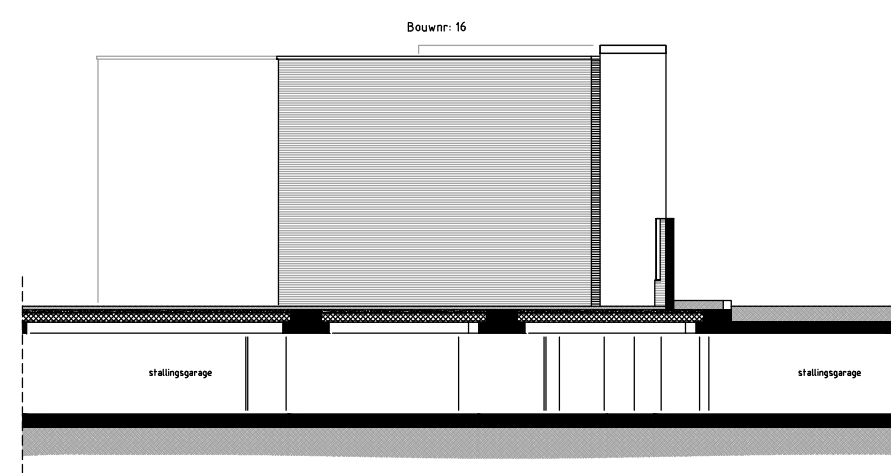
Bouwnummer 14
 1e verdieping
 Schaal: 1:50
 Datum: mei 2019



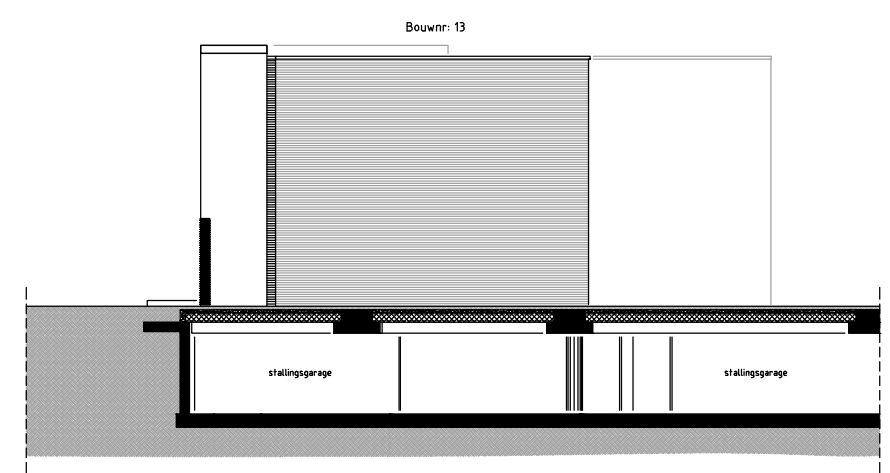
Voorgevel



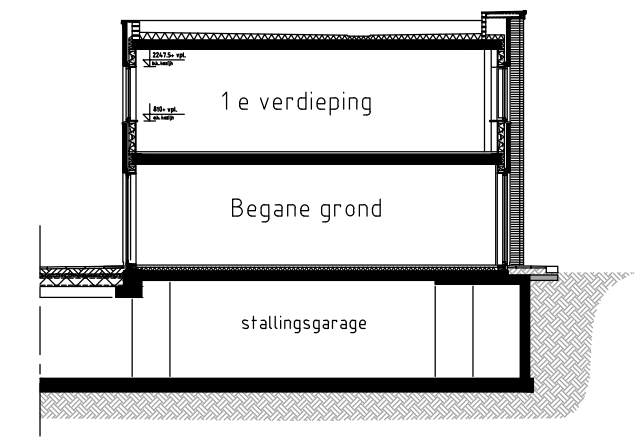
Achtergevel



Linkerzijgevel



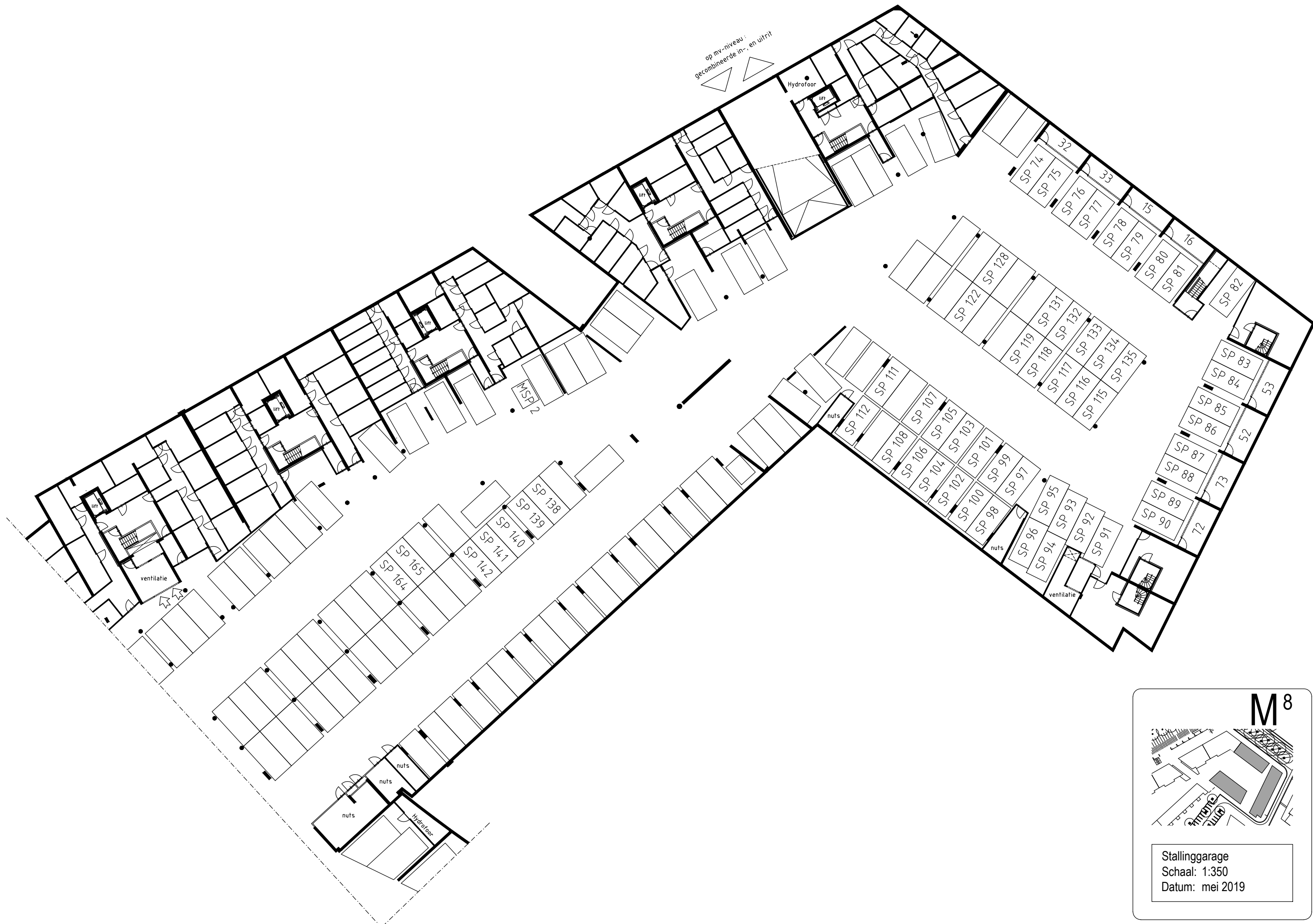
Rechterzijgevel



Doorsnede

Tjalk M⁸






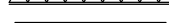
Gevels en Doorsnede
 Schaal: 1:200
 Datum: mei 2019




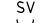











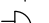
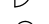
M⁸



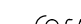


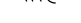
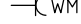






Stallinggarage
 Schaal: 1:350
 Datum: mei 2019

Renvooi

-  = metselwerk
-  = kalkzandsteen, dik 100/150/214
-  = kalkzandsteen vellingblokken, dik 100
-  = isolatie
-  = lichte separatiewand
-  = lichte separatiewand
-  = metalstud voorzetwand (met isolatie)
-  = geïsoleerde houtskeletbouwwand
-  = beton in het werk gestort

-  = Keukeninstallatie punten conform separate keukeninstallatietekening.

-  = stadsverwarming aansluiting
-  = thermostaat aansluiting
-  = enkelpolige schakelaar met geaarde enkele wandcontactdoos
-  = enkelpolige schakelaar
-  = dubbele schakelaar
-  = dubbele wissel schakelaar
-  = wissel schakelaar met geaarde enkele wandcontactdoos
-  = wissel schakelaar
-  = aansluiting plafondlichtpunt
-  = aansluiting wandlichtpunt
-  = zoemer
-  = drukknop deurzoemer
-  = mechanische ventilatie schakelaar hoofdbediening
-  = kamerthermostaat

-  = telefoonaansluiting (bedraad)
-  = centrale antenne aansluiting (bedraad)
-  = centrale antenne aansluiting (loos)
-  = aansluiting wasdroger (loos)
-  = aansluiting mechanische ventilatie (bedraad)
-  = aansluiting wasmachine (bedraad)
-  = geaarde wandcontactdoos
-  = geaarde dubbele wandcontactdoos
-  = ruimte voorzien van rookmelder(s)
-  = afzuigpunt mechanische ventilatie
-  = watermeter
-  r = radiator
-  c = convector

